

**ROCKY HILL CONGREGATIONAL CHURCH
UNITED CHURCH OF CHRIST**

Established 1727 ~ An Open and Affirming Community



February 26, 2017 ~ 10:00 a.m.

New Member Sunday

Last Sunday after Epiphany

Transfiguration

~ORDER OF WORSHIP~

We welcome all and extend a special greeting to our guests; our service is enriched by your presence! Please join us in Chapin Hall for fellowship time after worship. **The Welcome Table** in Chapin Hall offers information about the church and members who can answer your questions. **Hearing devices** are available for worship—ask an usher. **Nursery care** is available down the hall in Room 4.

WELCOME AND ANNOUNCEMENTS

Please include your full address and phone number as you sign our friendship registration pads, and please wear your nametags. All announcements should be written down and given to the ushers or pastor prior to worship. **If you have a prayer request you would like read aloud for today's prayers, please fill out one of the prayer cards found in the friendship registration pads (your name is optional) and be prepared to pass it to the center aisle at the time of the offering, when the cards will be collected.**

PRELUDE

"The Old Rugged Cross"

G. Bennard, arr. D. Hall

CALL TO WORSHIP

Tom Fulda

(based on Exodus 24:12-18 and Psalm 99)

One: We hear your challenge, O God, and your call:

Many: Come! Says the Lord. Come up to the Holy Mountain!

One: We hear you, our God, but we are afraid. What will we find there?

Many: Come! Says the Lord. Come up to the Holy Mountain!

One: We are assembled in this sanctuary, this holy place.

Let us meet together here, away from the distractions of the world.

Many: Come! Says the Lord. Come up to the Holy Mountain!

One: You have shown yourself to be a forgiving God, therefore we exalt your name. Yes, O God, we will come with excitement, trembling with anticipation, to your holy mountain!

Many: Open our eyes and our ears and our hearts to receive your Word.

*Please rise in body or in spirit.

Bold type denotes collective response

CALL TO WORSHIP (cont.)

One: Anoint us as your priests to those who live on the margins – the outcasts, the lonely, the ignored.

Many: Anoint us as your holy people.

One: Come! Says the Lord. Come up to the Holy Mountain! I am the Sovereign and Holy One. Do not be afraid.

Many: Come! Let us worship God!

*HYMN

“Down by the Riverside”

Gonna lay down my burden, down by the riverside,
Down by the riverside, down by the riverside.
Gonna lay down my burden, down by the riverside,
Down by the riverside.

Gonna lay down my sword and shield,
Down by the riverside...

Gonna talk with the Prince of Peace,
Down by the riverside...

Gonna shake hands around the world,
Down by the riverside...



***INVOCATION AND THE LORD'S PRAYER**

Holy God, we praise you for who you are.

We praise you for your faithfulness and for your tender mercies that are renewed every morning.

We exalt you for every blessing of yesterday, the gift of this day, and the promises of our tomorrows.

Grant us an enduring faith as we strive against oppression and despair.

Endow us with contagious joy that uplifts the downtrodden and inspires hope in you. Increase in us the faith and

courage of the prophets, the love of Jesus, and the wisdom of the Holy Spirit.

In your majestic name we pray in the name of your Son Jesus, who taught us to pray, saying,

Our Father who art in heaven, hallowed be thy name.

Thy kingdom come, thy will be done, on earth as it is in heaven.

Give us this day our daily bread,

And forgive us our debts, as we forgive our debtors.

And lead us not into temptation, but deliver us from evil.

For thine is the kingdom and the power and the glory forever. Amen.

***SUNG RESPONSE**

NC 743



Be still and know that I am God. Be still and know that

The first line of musical notation consists of a treble and bass clef staff in 3/4 time. The melody is written in the treble clef, and the bass line is in the bass clef. The lyrics are placed below the notes.



I am God. Be still and know that I am God.

The second line of musical notation continues the melody and bass line from the first line. It also consists of a treble and bass clef staff in 3/4 time, with lyrics placed below the notes.

MESSAGE FOR ALL AGES

RECEPTION OF NEW MEMBERS

CHILDREN'S RECESSIONAL

(Children are invited to depart for S.P.I.R.I.T. Church School)

"We Will Keep a Place For You"

by John Corrado



The image shows three staves of musical notation for the hymn "We Will Keep a Place For You". The music is written in treble clef with a key signature of one sharp (F#) and a common time signature (C). The lyrics are: "We will keep a place for you where - ev - er you may go. We'll sus-tain this home of faith and love you've come to know. Go in peace, bring hope to hearts that yearn. We will keep a place for you 'till you re-turn."

ANTHEM "Just A Closer Walk with Thee" traditional, arr. D Hall

SCRIPTURE READING Matthew 17:1-9 NT Pew Bible p18-19

SERMON "On the Mountain" Rev. Craig L. Cowing

***HYMN** "Precious Lord, Take My Hand" NCH (black) 472

OFFERING OF GIFTS

Following the receiving of offerings by the ushers, Rev. Cowing will come down the center aisle to collect your prayer cards.

Invitation to the Offering

For those who have already given their offering, Giving Cards are available in your pew so that all may participate in the act of the offering.

Offertory Anthem "This Little Light of Mine" H. Loes, arr. D Hall

*Doxology



Praise God from whom all blessings flow; Praise God, all creatures here below;



1 Praise God for all that love has done; Creator, Christ, and Spirit, One. Amen

*Prayer of Dedication

PRAYERS OF THE CHURCH

Joys & Concerns

Sung Call to Prayer “Behold Us, Lord, a Little Space” (verse 1) PH 395



1 Be - hold us, Lord, a lit - tle space From dai - ly tasks set free,
2 A - round us rolls the cease - less tide Of busi - ness, toil, and care,
3 Yet these are not the on - ly walls Where - in thou mayst be sought;
4 Thine are the loom, the forge, the mart, The wealth of land and sea,



And met with - in thy ho - ly place To rest a - while with thee.
And scarce - ly can we turn a - side For one brief hour of prayer.
On home - liest work thy bless - ing falls, In truth and pa - tience wrought.
The worlds of sci - ence and of art, Re - vealed and ruled by thee. A - men.



Pastoral Prayer

***HYMN**

“Peace Like a River”

in bulletin

BENEDICTION

***POSTLUDE**

“When the Saints Go Marching In”

traditional, arr. D Hall

LITURGIST

Tom Fulda

USHERS

Kim Burghoff, Polly and Don Pagnucco, and Wendy Ware

HOSPITALITY

Jackie Little and Nancy Harlow

*All music today performed by the
Rocky Hill Congregational Church Dixieland Band*

RHCC Dixieland Band Members:

Gail Hall, Clarinet

James Rolfe, Tenor Sax

Ruth Fitzgerald, Baritone horn

Rhody Triblets, Guitar

Mary DeLibero, Bass (keyboard)

John Corvo, Drums

Dave Hall, Trumpet, Director, and Arranger



LOOKING AHEAD

Tuesday, February 28, 5:30pm – Shrove Tuesday/Ash Wednesday gathering

Sunday, March 5th – First Sunday in Lent

Worship with communion, Childcare/Church school

Shrove Tuesday



Tuesday, February 28 – Shrove Tuesday Supper and Worship

5:30 p.m.

Shrove Tuesday and Ash Wednesday will be celebrated by Inreach and Faith Formation, on February 28^h at 5:30pm. Please join us for pancakes, activities and music; and then we will turn our hearts and minds to the reflective time of Lent, as celebrated with a service of prayer and ashes. Sign up sheets will be posted in Chapin Hall.

A Journey  *Through Lent*

Walking the Labyrinth Wed. March 1st, 9:00 AM - 5:00 PM
On Ash Wednesday the Chapel will be open for walking the labyrinth. Stop by the church to spend some time in prayerful reflection walking the labyrinth in our Chapel. There will be a basket of stones at the entry. You'll be invited to take a stone, carry it with you through the labyrinth, and leave it at the center. Labyrinths have been used for centuries, in many cultures, to facilitate prayer, meditation, and spiritual transformation. When we walk the labyrinth, we begin a pilgrimage. Where will yours take you?



UCC Super Saturday is a full-day of skill building; offering numerous workshops, worship, a marketplace of vendors, and an opportunity for everyone to network with one another.

Saturday, March 18, 2017 at 8:00 a.m. to 3:45 p.m. Minnechaug Regional High School, 621 Main Street, Wilbraham, MA 01095, Brochures are available in Chapin Hall.

See Craig or Georgette if you'd like to attend, or contact the church office.



Welcome New Members!

Alice Bradstreet has a varied religious background. Her father belonged to the Dutch reform church and served as the Sunday School superintendent. Her mother was Episcopalian. Alice was deeply impressed with Martin Luther which lead her to join a Lutheran church. Alice was born in Queens and lived in many different cities in NY. Alice was introduced to our church when she attended a couple of weddings here. Alice has a son who lives in CA and three cats. Alice loves cats and is an avid reader! While spending time with her cats is Alice's favorite thing, she did tell us that cooking definitely is not!

Rev. Ken Hoyt is a liberal-to-moderate Christian who believes in action as a justification of faith, based on the call from Luke's Gospel "to go and do". Ken resides in Windsor with his wife and cat. He is retired from parish ministry, having served churches in the mid-western US. He currently serves as a Team Chaplain for VITAS Home healthcare and Hospice. Ken may be absent from services for periods of time because he is also a supply preacher to the local UCC community. Ken and his wife have one married son and one grandson who is nine months old. Their son, who resides in Glendale California, is a special effects artist in the movie and television industry. Ken enjoys cooking with special emphasis on the Mediterranean area. He collects wine and studies culinary art as a hobby. Ken chose to be a member of RHCC for a variety of reasons including the facts that our pastor is genuine and contemporary, Georgette is eloquent and our music program is excellent and diverse.

Jared Maynard is an active member of our Music community. He has an extensive music background, is a classical guitarist and currently works as a music teacher in the Norwich school system. Jared grew up in Rhode Island and has lived in CT for the past 3 years. He attended college at University of Rhode Island where he met Jillian. He and Jill were married in our church about 3 years ago. Jared & Jill purchased Ruth Whipple's house (later Doug Sudell's house) on Bailey Road in Rocky Hill. Jared's interests include playing music and cooking.

John Piacentini currently lives in Rocky Hill on Washington Street. John moved to CT when he was 14. He joined the Marine Corp at 18 and lived for a while in MA. John has two children – a daughter, 21, and a son, 18. John grew up catholic but, after moving to Rocky Hill, was looking for a new church family when he was introduced to the church by Jennifer Martin. John is retired now but worked as a chef for the America School for the Deaf. John is getting married in July of this year and is a life-long NY Jets fan. His favorite thing to do is cook and, like most of us in this church, eat!!

The World Day of Prayer 2017

The service for 2017 will be held at our church on
Friday March 3rd at 7:00 p.m.

The service, entitled “*Am I Being Unfair to You?*” is written by the Christian Women of the Philippines. These women share their stories of intergenerational wisdom, traditions and experiences of God’s profound love and acceptance. WPD’s motto is: “*Informed prayer leads to prayerful action.*” For more information about this inspirational service please contact Marge Murk or the church office.



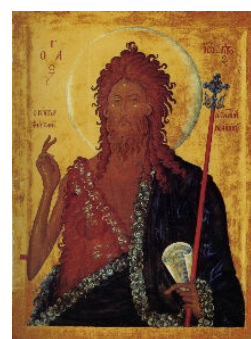
HOLY LAND DISPLAY

Holy Land Potluck Dinner and Presentation
Saturday, March 11 in Chapin Hall

Potluck ~5:00 p.m., Presentation over dessert ~6:00 p.m.

Bring your favorite dish to share, or try something new from the rich and ancient cuisines of the Holy Land! Cookbooks and recipe links are available from Anita at coffee hours after church. Join us for a fun evening presentation of Craig’s trip to the Holy Land. He’ll share his collection of photos and artifacts from his trip to the Holy Land in 2011. It includes a few paintings he did of various scenes, an icon and a creche from Bethlehem, plus other items. Come and enjoy!

The icon of the Month for March is a Macedonian depiction of John the Baptist, circa 1450. Visit anytime for prayer and contemplation in the Weil Chapel.



HONOR YOUR LOVED ONES
DEDICATE ALTAR FLOWERS OR LIGHT THE TOWER

Dedicating altar flowers or the church tower in memory of a loved one is a nice way to mark a special date or memory. Sign up on the flower calendar or the tower schedule, both in Chapin Hall, during coffee hour after worship. Another way to sign up is to contact the church office via:email office@rhccucc.org or call: 860-529-4167.

SCRIP-SURE



What is it? Scrip-sure is a fundraising program for our church, which allows the regular shopping we do at a variety of retailers to generate income for the church. How? Participating retailers sell gift certificates or gift cards to our church at a discount. Church members buy the certificates for full face value and redeem them for full face value, and our church keeps the difference as revenue. Everybody wins! The retailers get our business, and our church gets a regular source of revenue that involves nothing other than what we would all be doing anyway – shopping/spending at grocery stores, drugstores, restaurants, gas stations, and many other businesses, including online retailers

We have most of the usual cards in inventory for immediate purchase this morning.

Here is a partial list of cards typically available:

- Coffee: Dunkin Donuts, Starbucks
- Fast food: Boston Market, Chipotle, McDonalds, Panera, Subway, Wendy's
- Gas: Exxon/Mobil, Shell, Sunoco
- Grocery: Big Y, Stop & Shop, Trader Joe's, Westside Marketplace, Whole Foods
- Pharmacy: CVS, Walgreens
- Restaurants: Bertucci's, Bonefish Grill, Buffalo Wild Wings, Denny's, Olive Garden, On the Border, Outback Steakhouse, Red Lobster
- Shopping: Amazon, Barnes & Noble, Bed Bath & Beyond, Home Depot, Kohl's, iTunes, L.L. Bean, Lowes, Michaels, Payless Shoes, Target, Toys R Us, Walmart

Today is the "end of February" deadline to order gift cards that are not stocked in inventory. A comprehensive listing of all available retailers can be picked up at the scrip table in Chapin Hall. Cards ordered by today will be available for pickup on March 5. The next ordering deadline will be on March 26.

Did you know that you can donate to the Rocky Hill Food Pantry and "Covenant-to-Care for Children" through our scrip program? Your cash/check donations are used to buy gift cards to local groceries (food pantry) or other retail stores (CC). For these donations, we do not retain any profit, so a \$1.00 donation effectively buys about \$1.07 in groceries or clothing. You may donate at the scrip table in Chapin Hall.

Stop by the scrip table in Chapin Hall this morning for a complete listing of available cards, or to have all of your questions answered. Think SCRIP!

THIS WEEK AT RHCC

February 26

10:00am **Worship**
9:30am **Childcare**
10:00am **Church School**
4:00pm **Tamil School**
5:00pm **Confirmation Class**
6:00pm **MS Youth**

February 27

9:30am NEWSLETTER MAILING

7:00pm **Women's AA**
7:30pm **Bell Choir**

February 28

5:30pm SHROVE TUESDAY GATHERING

Chapel/Chapin

7:00pm **Hearing Voices**

March 1

ASH WEDNESDAY

Labyrinth Meditation

7:30am **LSP Registration**
6:00pm **Pilates**
7:30pm **Choir**

March 2

9:30am **Music Together**
7:30pm **Men's AA**

March 3

7:00pm **World Day of Prayer
Worship Service**
8:00pm **Reception**

Sunday

Sanctuary
Room 4
Rms 24,25,26
Rms 22,23,25,26,27
Parlor
Chapin Hall

Monday

Chapin Hall
Sanctuary

Tuesday

Room 23

Wednesday

Chapel

Fiorilli
Chapin Hall
Sanctuary

Thursday

Room 22
Chapin Hall

Friday

Sanctuary &
Chapin Hall

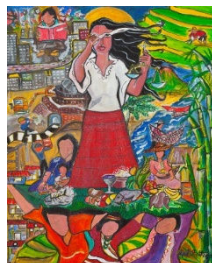


26	Karen Birck
27	Dot Wenzel
27	Roxanne Molina
27	Keira Silkowski
27	Gabriella Silkowski
28	Wayne MacNeil
28	Jean Krischus-Henning
28	Sarah Angeloni
29	Joseph Sheehan

Shrove Tuesday



*Shrove Tuesday, 5:30pm:
Please join us for pancakes, activities and
music; and then we will turn our hearts
and minds to the reflective time of Lent,
as celebrated with a service of prayer and
ashes.*



Rocky Hill Congregational Church, United Church of Christ
805 Old Main Street
Rocky Hill, CT 06067

Church Office: office@rhccucc.org / 860 529-4167
Church Website: rhccucc.org
Visit us on Facebook at: www.facebook.com/rhccucc

Office Hours

Monday – Thursday 9:00 a.m. to 2:00 p.m.

Friday – 9:00 a.m. to 12:00 p.m.

Open and Affirming Statement

Because we believe that all people are created in God's image and thus are blessed and loved equally by God, and because love is a unifying and strengthening force within our Christian Faith,

We, the members of the Rocky Hill Congregational Church, United Church of Christ, hereby declare ourselves an Open and Affirming Christian community, actively expressing Jesus' inclusive embrace of all people.

We welcome all who seek to follow Jesus, including persons of every age, gender, race, national origin, faith background, marital status and family structure, sexual orientation, gender identity and expression, mental and physical ability, economic and social status, and educational background, to share in the life, leadership, ministry, fellowship, worship, sacraments, responsibilities, blessings and joys of our church family.

Jesus teaches us to welcome all God's children into God's covenantal community. As we grow together in faith and love, we will strive to celebrate the diversity in which God has created us.

Approved by congregational vote June 2009

Ministry Team

Ministers: All the members of the church

Pastor: The Rev. Craig L. Cowing ccowing@rhccucc.org

Minister for Children and Youth: Georgette L. Huie ghuie@rhccucc.org

Minister of Music: Mary DeLibero mary@rhccucc.org

Office Manager: Theresa E. Cleary office@rhccucc.org

Webmaster: Dave Hall webmaster@rhccucc.org

Child Care Provider: Liz Pulling lrpulling@icloud.com